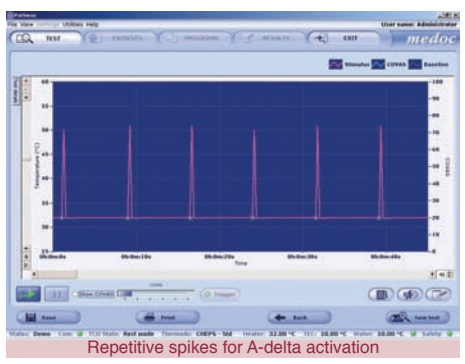


# A New Bio-Marker for Pharmaceutical Development

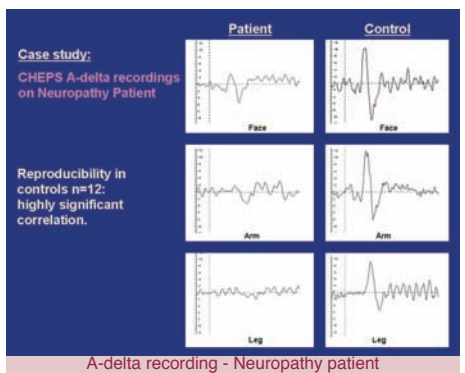
The **PATHWAY** Pain & Sensory Evaluation System is an advanced, computerized thermal stimulator designed for advanced neurological and pain research, with application as a new bio-marker in the evaluation of new compounds for peripheral neuropathies and neuropathic pain.

**PATHWAY model CHEPS (Contact Heat Evoked Potential Stimulator)** expands the quantitative investigation of human nociceptive pathways, providing pharmaceutical companies with an objective view of the pain process demonstrating the cortical appreciation of pain\*.

CHEPS delivers rapid heat pulses at a rate up to 70° C/sec. from a baseline up to 55° C in 250 milliseconds; enabling for the first time, selective activation and recording of both A-delta & C-fiber cerebral evoked potentials



- Facilitates decision making between multiple compounds for early development
- Provides efficacy data coming out of Phase-1 programs
- Reduces statistical sample size
- Assists in defining dosage
- Reduces time to market
- Application in pre-clinical phase
- Use with fMRI compatible EEG recording for multi-modal evaluation of small fiber function



*“Current methodology, regarding the evaluation of compounds for neuropathic pain, does not specifically look at structural effects of the pain pathways. Confidence intervals are wide and require a large number of patients. CHEPS generated small-fiber evoked potentials can demonstrate if a compound has an effect on small-fiber nerves, such as improving function or structure. The functioning of this nerve pathway can be assessed in a robust, reproducible way, allowing a smaller numbers of patients to be investigated and potentially an earlier assessment of efficacy”*

\*All references on file and available on request

**Medoc Advanced Medical Systems, U.S. • Compass Medical Technologies, Inc**  
1502 West Highway 54 – Suite 404, Durham, North Carolina 27707  
phone: 919.402.9600 • fax: 919.402.9607 • medoc@mindspring.com

**Medoc Ltd. Advanced Medical Systems • World Headquarters**  
1 Hadekel St, PO.Box 423 Ramat Yishai, Israel 30095  
phone: +972-4-903.8800 • fax: +972-4-903.8808 • medoc@medoc-web.com

**CE European Authorized Representative** CEpartner4U BV  
Esdoornlaan 13 3951 DB Maarn, The Netherlands, office@CEpartner4U.nl  
phone: +31-343-442.524 • mobile: +31-6-516-536.26 • fax: +31-343-442.162